

Data Spaces Symposium

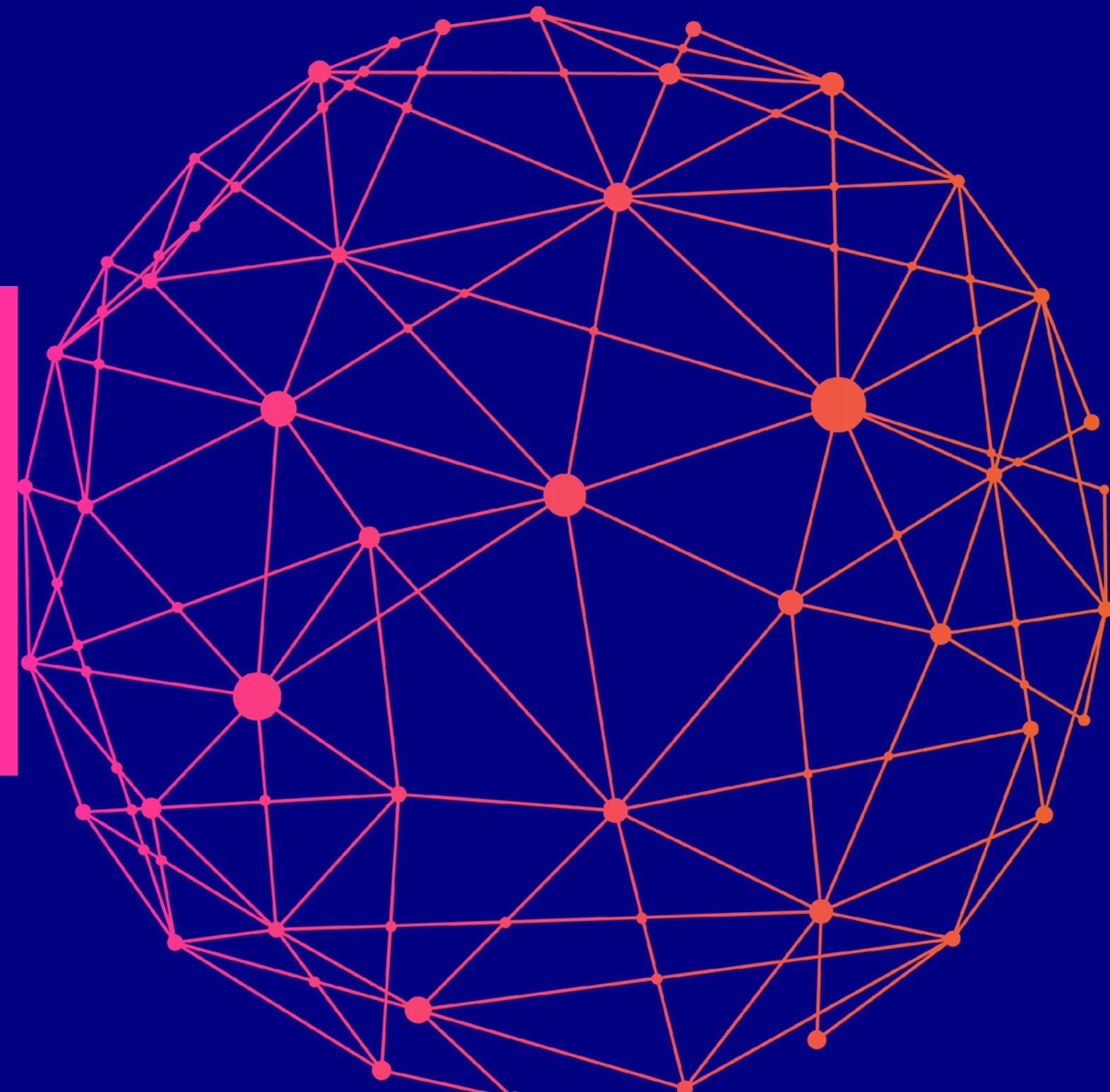
Accelerating adoption. Increasing impact.

**Towards a European Mobility Data Space:
Interoperability, governance, and
compliance**

**How data spaces can drive compliance
automation & help reduce admin burden**

Madrid, 10 February 2026

**Dr. Eusebiu Catana,
ERTICO-ITS Europe**



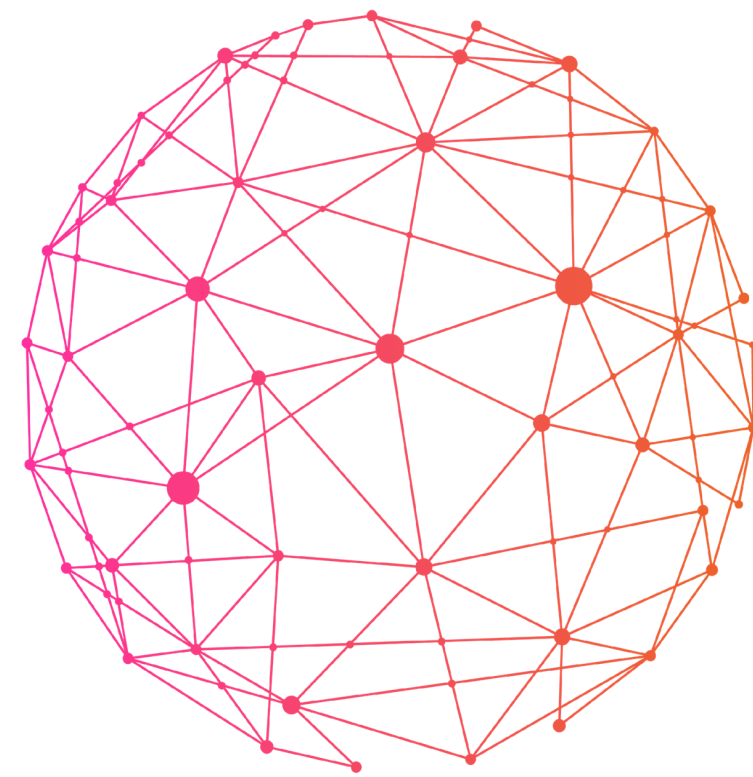
Data Spaces Symposium

The Challenge: Fragmented Mobility Data & Regulation

Topics: Today's mobility ecosystem is complex and inefficient

- Mobility systems are not only technically complex but administratively fragmented.
- Fragmented regulatory reporting across cities and jurisdictions
- Administratively fragmented, high administrative burden for operators and authorities
- Difficulties in real-time monitoring (service quality, emissions, safety)
- Added complexity from emerging mobility technologies (e.g. autonomous vehicles)

→slowing innovation and oversight



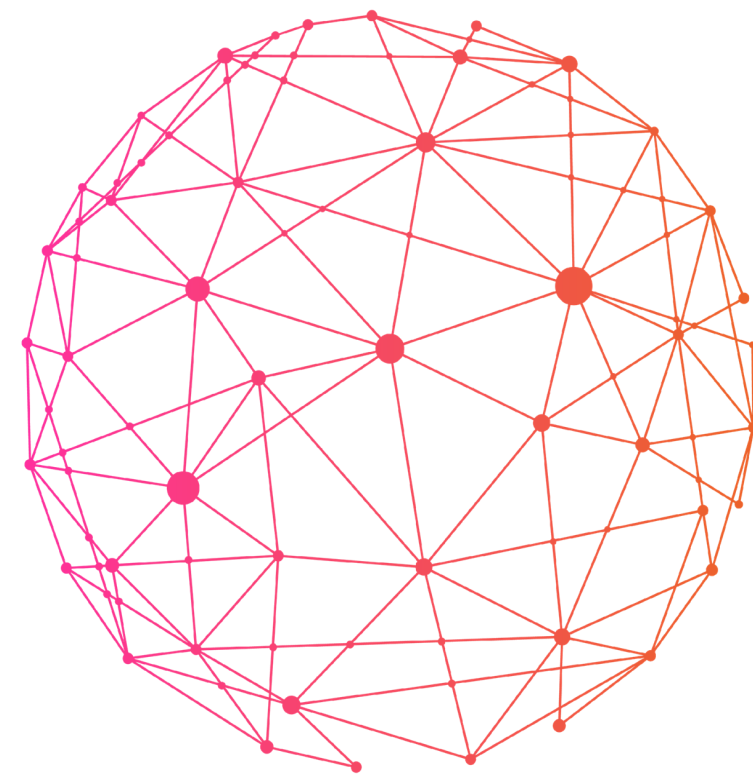
Data Spaces Symposium

Example of Regulatory Complexity: National Access Points (NAPs)

Topics: NAPs illustrate how regulation multiplies reporting obligations

- NAPs enable access, exchange, and reuse of transport data across Europe
- Multiple delegated regulations govern different data domains:
 - MMTIS – Multimodal Travel Information
 - RTTI – Real-Time Traffic & Travel Information
 - SRTI – Safety-Related Traffic Information
 - SSTP – Safety & Security Transport Information (incl. static data)

→each regulation introduces distinct reporting, validation, and compliance requirements.



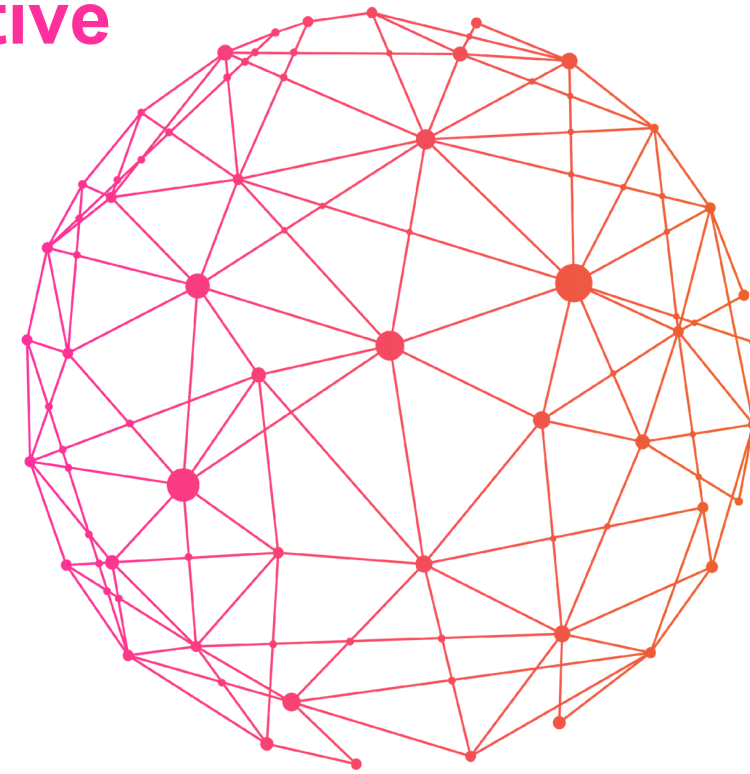
Data Spaces Symposium

The Solution: A Federated Mobility Data Space

Topics: **One data-sharing framework replaces repetitive reporting**

- Federated mobility data space for streamlined data exchange
- Operators publish standardized datasets **once**
- Regulatory requirements encoded as **policy-as-code**
- Real-time compliance checks (service levels, emissions, safety)

→ **compliance becomes continuous and automated instead of manual and repetitive**



Data Spaces Symposium

NEXT STEP: Architecture & Alignment with European Standards

Topics: **align with EU data space principles**

Projects: deployEMDS, NAPCORE, NAPCORE X, SCUDO, 3DxVERSE, O-CEI, BoostEDIC T&L

Federated, sovereign, and trusted data sharing

Certified connectors & common semantic models:

DATEX II, NeTEx, SIRI(Service Interface for Real-Time Information)

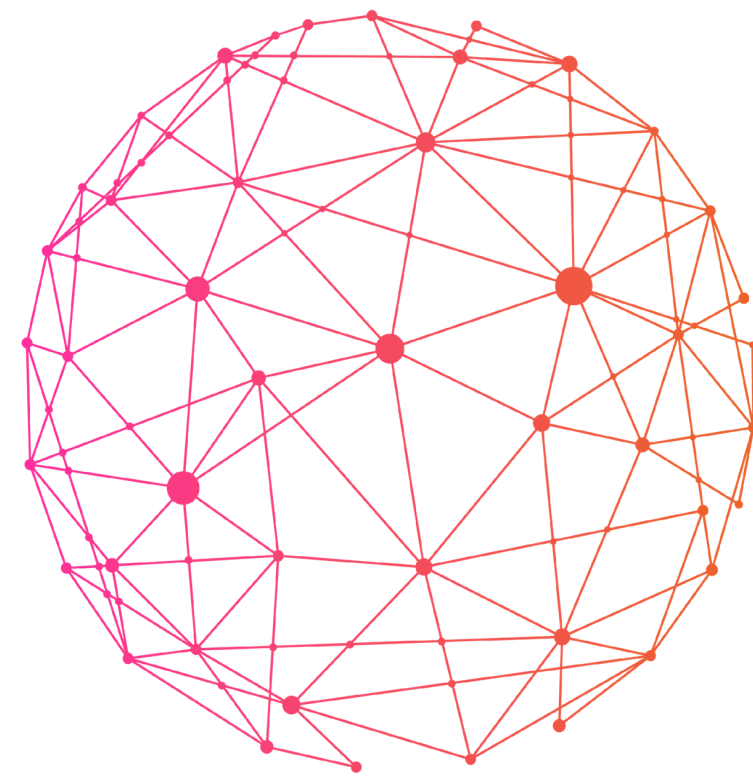
Aligned with:

EU Mobility Data Space

IDSA

GAIA-X

→This ensures interoperability, trust, and scalability at European level



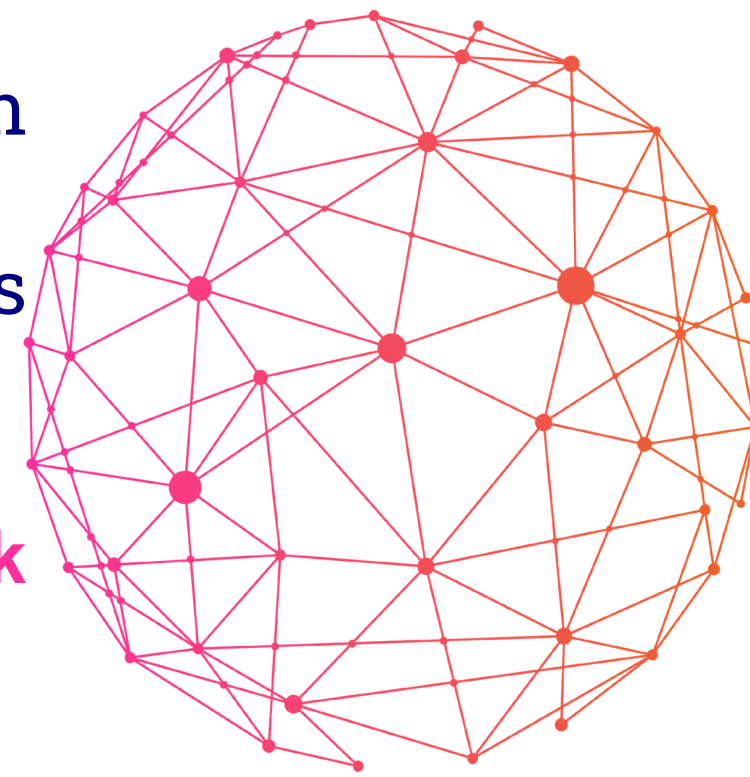
Data Spaces Symposium

Impact: Efficiency, Compliance & Innovation

Topics: tangible benefits for authorities, operators, and innovation

- Fragmented regulations and data silos are slowing down efficient, innovative mobility systems.
- NAPs highlight how multiple regulations create complex and overlapping data reporting obligations.
- A federated mobility data space enables “report once, comply everywhere” through standardized data and policy-as-code.
- EU-aligned data space architectures ensure trusted, interoperable, and sovereign mobility data sharing.
- The approach reduces administrative burden, strengthens oversight, and enables scalable, future-ready mobility services.

→ a data space-driven approach transforms regulation from a bottleneck into an enabler



Thank you!