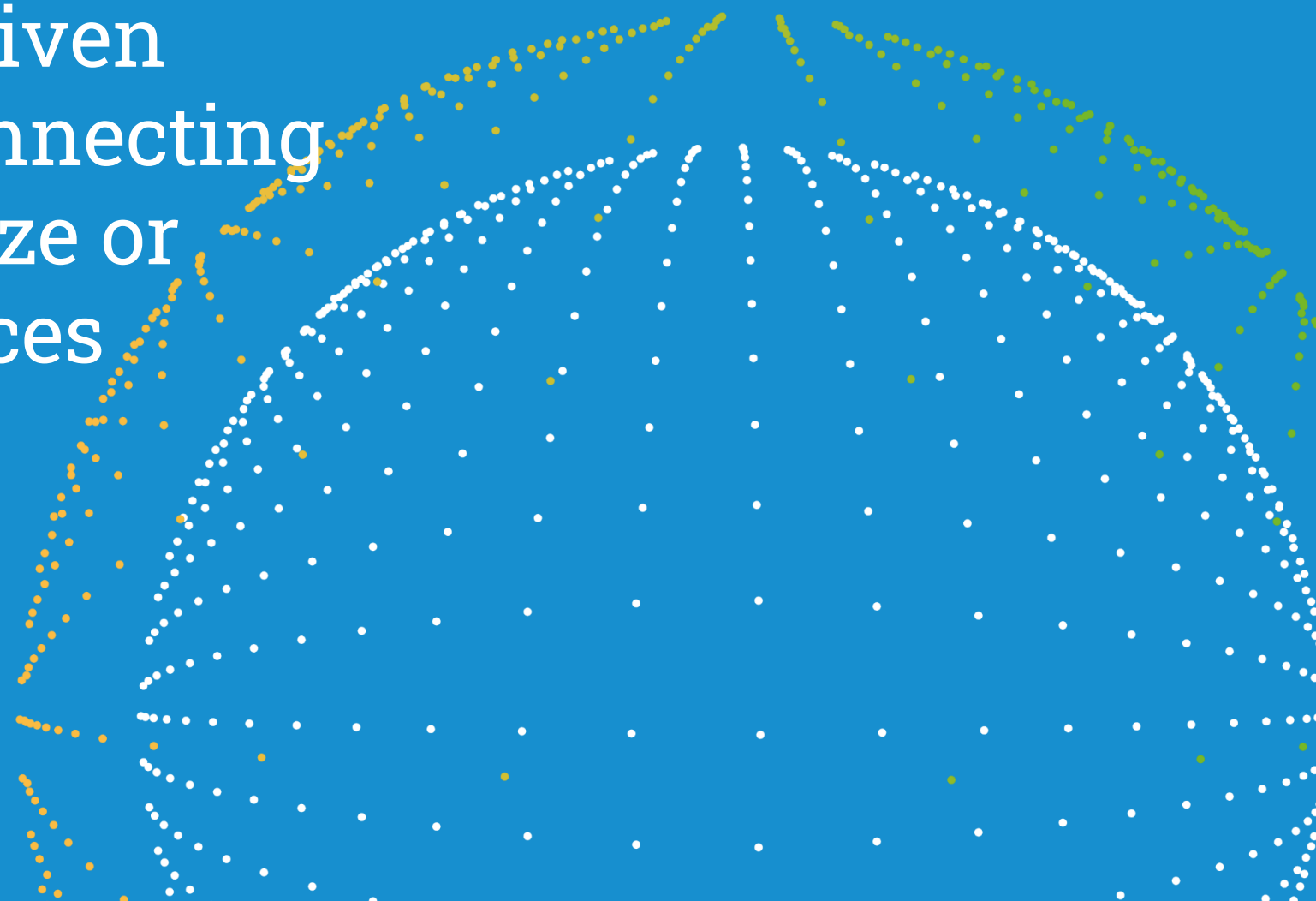


# sovity's EDC Connectors

are the foundation for data sharing and data-driven business models connecting companies of any size or domain in Data Spaces

---

Dr. Sebastian Opriel  
CTO & Co-Founder  
sovity GmbH



# Journey towards Interoperability

1. **Who is soVity**
2. soVity's EDC versions
3. Open-Sourced Features
4. What's next?

# sovity

easiest access to Data Space technologies



## Data sovereignty experts

Team of experts involved in Data Space technology since its origin in 2016



## Best technology

Connector and Data Space based on open-source software enriched with key features



## Part of key initiatives

sovity shapes the standard of sovereign data exchange with important initiatives



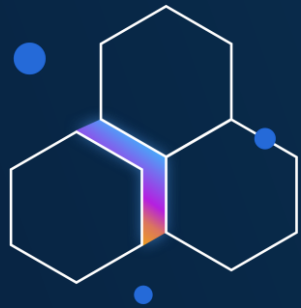
## Strong network

Customers and partners give strong evidence to team, products and services of sovity

Managed software product

# Data Sovereignty-as-a-Service

by soviety to accelerate Data Spaces



## Connector-as-a-Service

---

Easiest onboarding and participation in Data Spaces by relevant Connector technology



## Data Space-as-a-Service

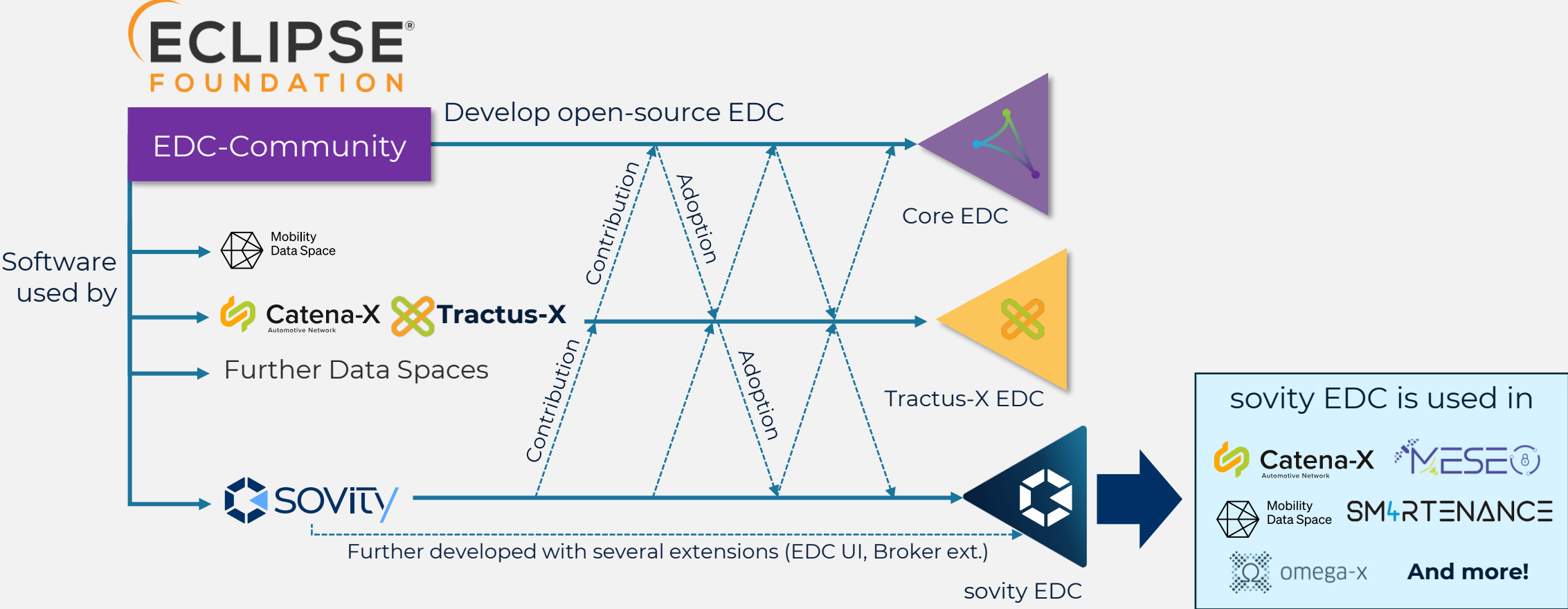
---

Fastest setup of entire Data Space based on latest technology standards to facilitate Data Space operators

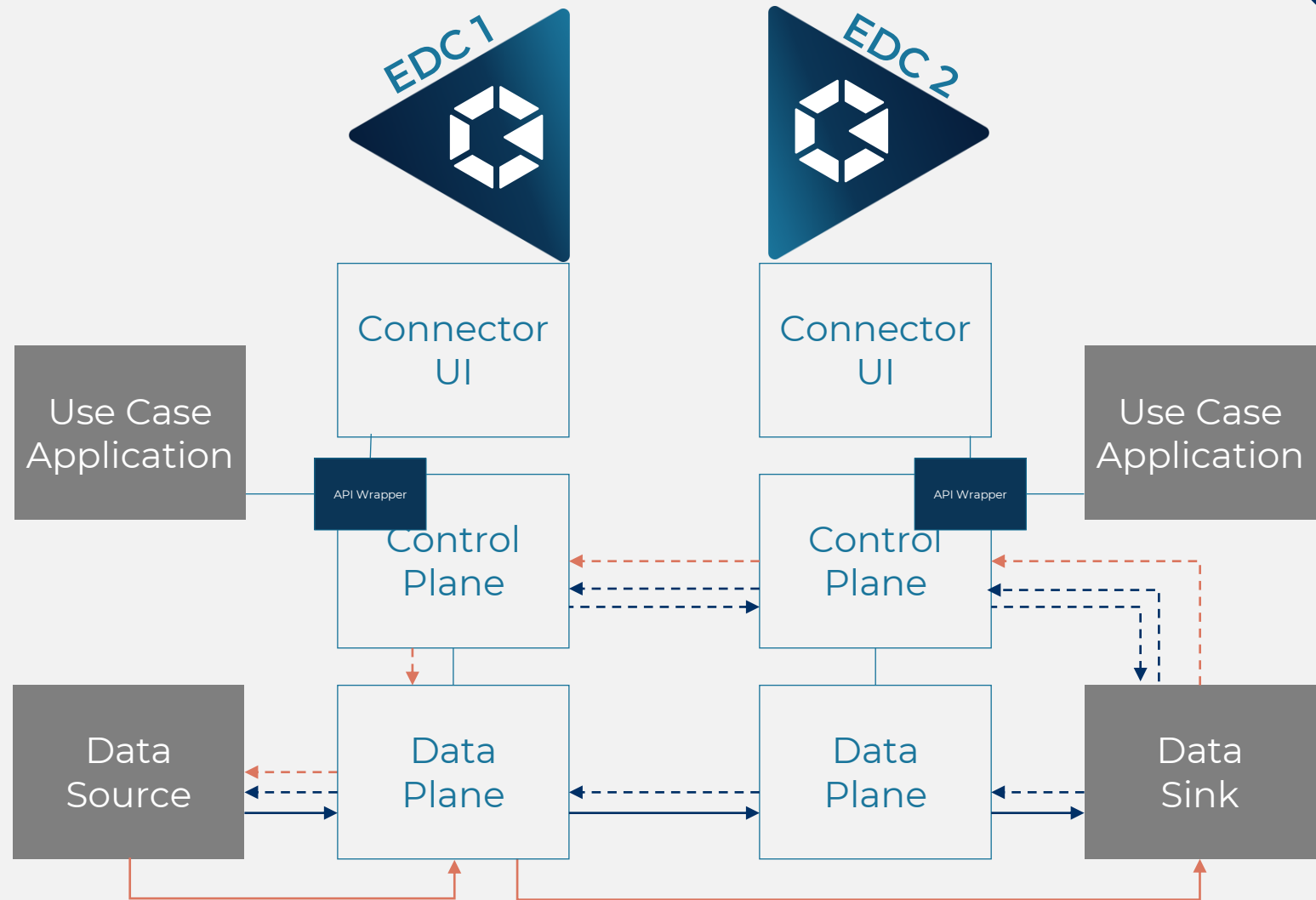
# Journey towards Interoperability

1. Who is sovity
2. **sovity's EDC versions**
3. Open-Sourced Features
4. What's next?

# sovity's EDC is based on Open Source



# EDC: Interplay between Connectors



# sovity offering: CaaS features and pricing

## Community Edition open-source

**free**

### Leverage sovity open-source EDC Connector self-hosted

- ✓ Open Core: Based on EDC open-source
- ✓ sovity EDC frontend
- ✓ Basic extensions to connect data sources
- ✓ Docker compose templates
- ✓ Postgres DB

## CaaS Basic Data Space Starter

**Free trial**

### Managed EDC Connector to begin your journey in Data Spaces

- ✓ **Everything of Community Edition, plus**
- ✓ Cloud hosting & management
- ✓ User access mgmt. with 1 user
- ✓ 2 consumed data contracts included
- ✓ Monthly data transfer volume: 100 GB
- ✓ Self-service via sovity knowledge base & FAQ
- ✓ Monitoring tools



## CaaS Professional Data Space Expert

**Free trial**

### Managed EDC Connector to scale your Data Space involvement

- ✓ **Everything of CaaS Basic, plus**
- ✓ User access mgmt. with unlimited users
- ✓ Up to 15 consumed data contracts included
- ✓ Unlimited data transfer volume
- ✓ Premium Support (Mail)
- ✓ Guided onboarding
- ✓ Premium infrastructure
- ✓ (soon) Advanced catalog function



## CaaS Enterprise Data Space Scaler

**Contact Sales**

### Scales enterprise usage of managed EDC Connector

- ✓ **Everything in CaaS Premium, plus**
- ✓ Individual consumption of data contracts
- ✓ Use company SSO/SAML/LDAP
- ✓ Developer API access
- ✓ Choose your infrastructure
- ✓ (soon) ETL data integration
- ✓ (soon) easy integration of use case by API Wrapper
- ✓ (soon) build your own API



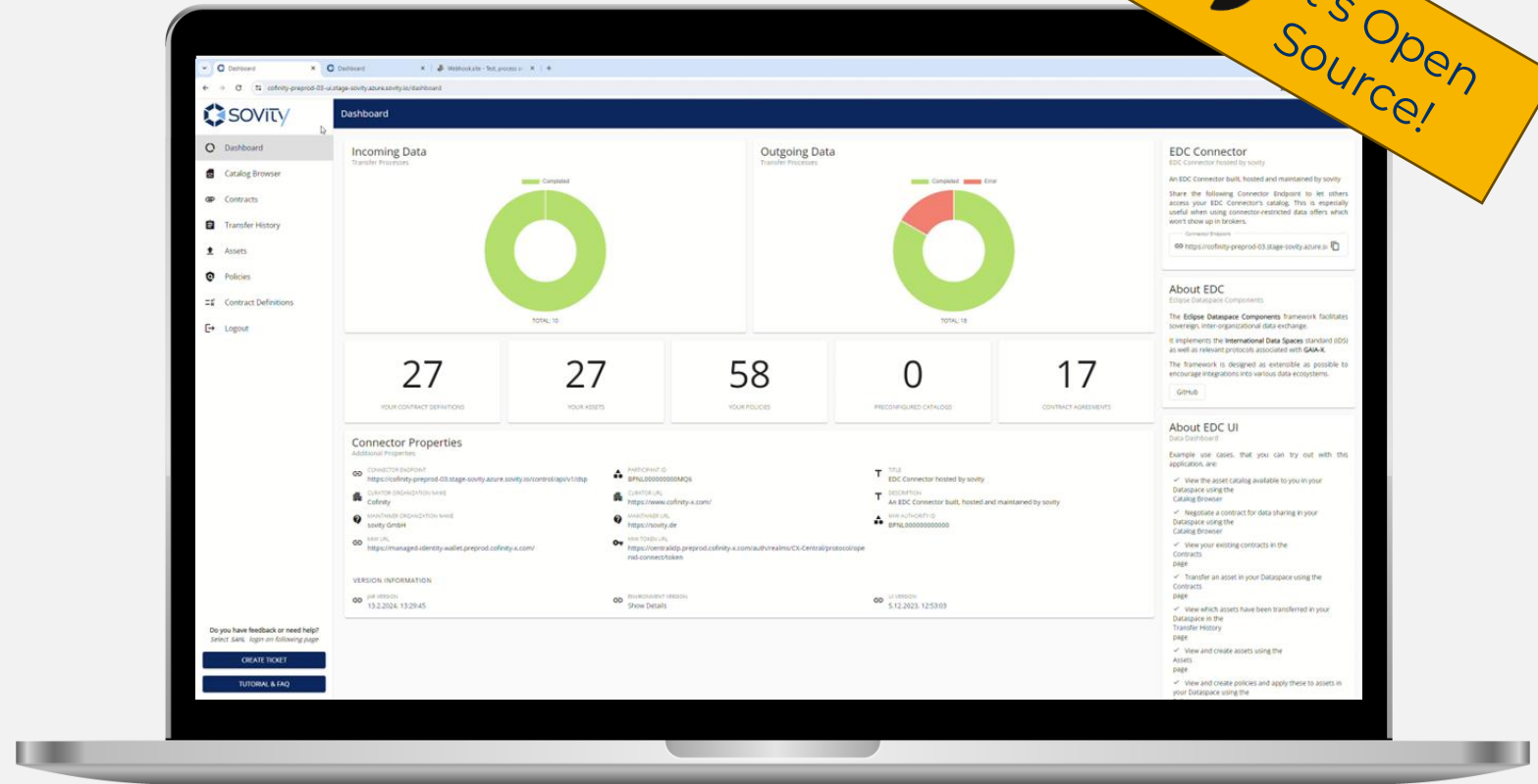


# Journey towards Interoperability

1. Who is soviety
2. soviety's EDC versions
3. **Open-Sourced Features**
4. What's next?

# UI Demo journey: Data Exchange in Catena-X

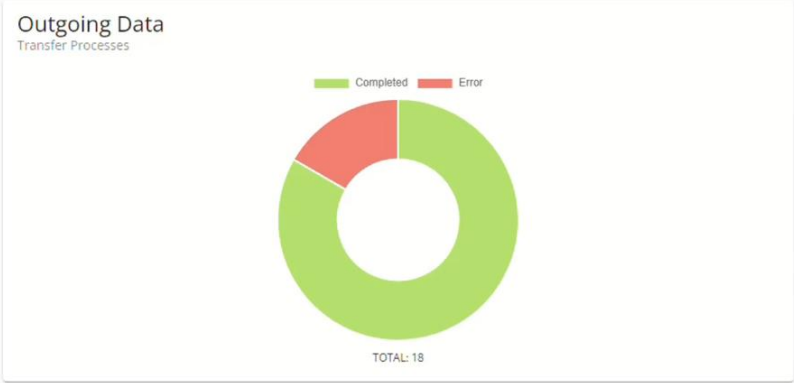
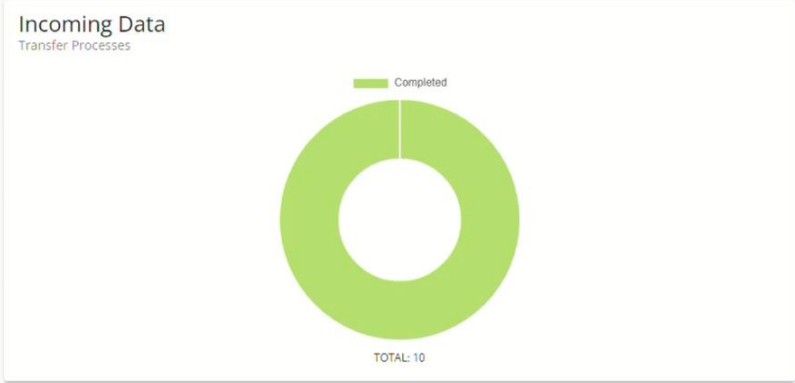
 It's Open Source!





Dashboard

- Dashboard
- Catalog Browser
- Contracts
- Transfer History
- Assets
- Policies
- Contract Definitions
- Logout



27  
YOUR CONTRACT DEFINITIONS

27  
YOUR ASSETS

58  
YOUR POLICIES

0  
PRECONFIGURED CATALOGS

17  
CONTRACT AGREEMENTS

### Connector Properties

Additional Properties

CONNECTOR ENDPOINT https://cofinity-preprod-03.stage-sovity.azure.sovity.io/control/api/v1/dsp	PARTICIPANT ID BPNL00000000MQ6	TITLE EDC Connector hosted by sovity
CURATOR ORGANIZATION NAME Cofinity	CURATOR URL https://www.cofinity-x.com/	DESCRIPTION An EDC Connector built, hosted and maintained by sovity
MAINTAINER ORGANIZATION NAME sovity GmbH	MAINTAINER URL https://sovity.de	MIW AUTHORITY ID BPNL000000000000
MIW URL https://managed-identity-wallet.preprod.cofinity-x.com/	MIW TOKEN URL https://centralidp.preprod.cofinity-x.com/auth/realms/CX-Central/protocol/openid-connect/token	

VERSION INFORMATION

JAR VERSION 13.2.2024, 13:29:45	ENVIRONMENT VERSION Show Details	UI VERSION 5.12.2023, 12:53:03
------------------------------------	-------------------------------------	-----------------------------------

### EDC Connector

EDC Connector hosted by sovity

An EDC Connector built, hosted and maintained by sovity

Share the following Connector Endpoint to let others access your EDC Connector's catalog. This is especially useful when using connector-restricted data offers which won't show up in brokers.

Connector Endpoint  
https://cofinity-preprod-03.stage-sovity.azure.sovity.io/control/api/v1/dsp

### About EDC

Eclipse Dataspace Components

The Eclipse Dataspace Components framework facilitates sovereign, inter-organizational data exchange.

It implements the International Data Spaces standard (IDS) as well as relevant protocols associated with GAIA-X.

The framework is designed as extensible as possible to encourage integrations into various data ecosystems.

[GitHub](#)

### About EDC UI

Data Dashboard

Example use cases, that you can try out with this application, are:

- View the asset catalog available to you in your Dataspace using the Catalog Browser
- Negotiate a contract for data sharing in your Dataspace using the Catalog Browser
- View your existing contracts in the Contracts page
- Transfer an asset in your Dataspace using the Contracts page
- View which assets have been transferred in your Dataspace in the Transfer History page
- View and create assets using the Assets page
- View and create policies and apply these to assets in your Dataspace using the Policies page

Do you have feedback or need help?  
Select SAML login on following page

[CREATE TICKET](#)

[TUTORIAL & FAQ](#)

**SOVITY**

- Dashboard
- Catalog Browser
- Contracts
- Transfer History
- Assets**
- Policies
- Contract Definitions
- Logout

Do you have feedback or need help?  
Select [SAML](#) login on following page

CREATE TICKET

TUTORIAL & FAQ

Assets

Search assets + Create asset

1 - 27 of 27

urn:uuid:f64b239b-3424-44f5-bd8d-57c24367b28a-urn:uuid:e5822387-ad48-44fe-9534-239f7f6e4281 BPNL000000000MQ6	urn:uuid:25f9-472c-bd3f-2250711c4e7-urn:uuid:c78-5de2-414b-af8-5537e54386c	urn:uuid:2006bfd2-de29-41d9-96d9-b135c400a91c-urn:uuid:470f6b87-ac6f-4e84-a563-f5e90c3bac3f BPNL000000000MQ6	urn:uuid:17b4fab4-c4dc-4d84-9d02-a2e5e17b8e38-urn:uuid:b371f767-e17c-4efc-a44c-2a17490ab8b8 BPNL000000000MQ6
urn:uuid:05be6ca3-91e8-47ea-ae1e-aeeb1dbfe13e-urn:uuid:81015b4a-7d73-4c98-8c79-b9fa10fef8bb BPNL000000000MQ6	urn:uuid:22a-8918-4833-b9-71cd2024498-urn:uuid:ad5-ef9e-49bf-af8-9afb436aeaa	urn:uuid:dbe33f37-3d76-4e0a-8aef-2fd3458b9ee9-urn:uuid:a69979a1-86d4-46af-9187-a68e7f7139c8 BPNL000000000MQ6	urn:uuid:63357a7f-3c88-4cbd-9cd0-52f2a04ee23d-urn:uuid:f181e624-af42-4c83-864c-51df6ca8ce66 BPNL000000000MQ6
urn:uuid:b77e5cf7-0696-45c2-9eb0-caf0b002a903-urn:uuid:acb27da5-0151-40ca-acf5-dea24af0e977 BPNL000000000MQ6	urn:uuid:872-5295-4a2f-a2-6422c6eff8e1-urn:uuid:12e-3020-48a4-9e-950d59885d4	urn:uuid:bd576830-cda8-49fe-a547-16eb7a23dcea-urn:uuid:65f220e4-04c9-4803-b7c6-0c1ac6e033ef BPNL000000000MQ6	urn:uuid:fc6564f0-dc35-4cbc-b71d-0fa4d3ba7b6f-urn:uuid:17a1d7d1-8807-46bc-91e7-aed58e448cf3 BPNL000000000MQ6
urn:uuid:5700abe0-a1d3-4f7a-acbe-d3ee587cac86-urn:uuid:25b18a09-35e5-4b34-9752-f438ada05286 BPNL000000000MQ6	urn:uuid:b32-7cc6-495a-b4-a4be88c054e-urn:uuid:897-719d-48d9-9e-2189355fdd7	urn:uuid:4062971f-e65f-41e3-a2b3-8882624e9d02-urn:uuid:4cebbba95-b267-487b-9e01-02b75c7fe20b BPNL000000000MQ6	urn:uuid:efb30fe8-f066-4065-a810-a866745df751-urn:uuid:61949771-4b79-4326-8978-3993a1d60d34 BPNL000000000MQ6
urn:uuid:1d650cd9-34d3-416a-9efd-f910c3731de1-urn:uuid:63340f4d-b25a-40c6-94c4-dce6b8df8590 BPNL000000000MQ6	urn:uuid:984-aa85-416b-bc-1395989fbd-urn:uuid:06e-d476-4cfa-8a-73ae21bcf9e		

### Create New Asset

**1** General Information

Name \*  Version

Asset ID \*

Description

Keywords    Add keyword...

Language

Content Type

Endpoint Documentation

Publisher  Standard License

**2** Datasource Information

Cancel

urn:uuid:f64b239b-3424-44f5-bd8d-57c24367b28a-urn:uuid:e5822387-ad48-44fe-9534-239f7f6e4281 BPNL0000000000MQ6	urn:uuid:25f9-472c-bd3f-2250711c4e7-urn:uuid:c78-5de2-414b-af5537e54386c BPNL0000000000MQ6	urn:uuid:2006bfd2-de29-41d9-96d9-b135c400a91c-urn:uuid:470f6b87-ac6f-4e84-a563-f5e90c3bac3f BPNL0000000000MQ6	urn:uuid:17b4fab4-c4dc-4d84-9d02-a2e5e17b8e38-urn:uuid:b371f767-e17c-4efc-a44c-2a17490ab8b8 BPNL0000000000MQ6
urn:uuid:05be6ca3-91e8-47ea-ae1e-aeeb1dbfe13e-urn:uuid:81015b4a-7d73-4c98-8c79-b9fa10fef8bb BPNL0000000000MQ6	urn:uuid:22a-8918-4833-b5-71cd2024498-urn:uuid:ad5-ef9e-49bf-af8-9afb436aeaa BPNL0000000000MQ6	urn:uuid:dbe33f37-3d76-4e0a-8aef-2fd3458b9ee9-urn:uuid:a69979a1-86d4-46af-9187-a68e7f7139c8 BPNL0000000000MQ6	urn:uuid:63357a7f-3c88-4cbd-9cd0-52f2a04ee23d-urn:uuid:f181e624-af42-4c83-864c-51df6ca8ce66 BPNL0000000000MQ6
urn:uuid:b77e5cf7-0696-45c2-9eb0-caf0b002a903-urn:uuid:acb27da5-0151-40ca-acf5-dea24af0e977 BPNL0000000000MQ6	urn:uuid:872-5295-4a2f-a2-6422c6eff8e1-urn:uuid:12e-3020-48a4-9e-950d59885d4 BPNL0000000000MQ6	urn:uuid:bd576830-cda8-49fe-a547-16eb7a23dcea-urn:uuid:65f220e4-04c9-4803-b7c6-0c1ac6e033ef BPNL0000000000MQ6	urn:uuid:fc6564f0-dc35-4cbc-b71d-0fa4d3ba7b6f-urn:uuid:17a1d7d1-8807-46bc-91e7-aed58e448cf3 BPNL0000000000MQ6
urn:uuid:5700abe0-a1d3-4f7a-acbe-d3ee587cac86-urn:uuid:25b18a09-35e5-4b34-9752-f438ada05286 BPNL0000000000MQ6	urn:uuid:b32-7cc6-495a-b4-a4be88c054e-urn:uuid:897-719d-48d9-9e-2189355fdd7 BPNL0000000000MQ6	urn:uuid:4062971f-e65f-41e3-a2b3-8882624e9d02-urn:uuid:4cebbba95-b267-487b-9e01-02b75c7fe20b BPNL0000000000MQ6	urn:uuid:efb30fe8-f066-4065-a810-a866745df751-urn:uuid:61949771-4b79-4326-8978-3993a1d60d34 BPNL0000000000MQ6
urn:uuid:1d650cd9-34d3-416a-9efd-f910c3731de1-urn:uuid:63340f4d-b25a-40c6-94c4-dce6b8df8590 BPNL0000000000MQ6	urn:uuid:984-aa85-416b-b6-1395989fbd-urn:uuid:06e-d476-4cfa-8a-73ae21bcf9e BPNL0000000000MQ6		

### Create New Asset

- General Information
- Datasource Information

**DATASOURCE**

Type

- REST-API Endpoint
- Custom Datasource Config (JSON)

**METHOD**

Method \*

GET

Enable Method Parameterization

**URL**

URL \*

Enable Path Parameterization

**QUERY PARAMS**

Add Query Param Enable Query Param Parameterization

**REQUEST BODY**

The request body can only be set from the consumer side, if parameterization is enabled.

Enable Request Body Parameterization

Cancel Create



**SOVITY**

- Dashboard
- Catalog Browser
- Contracts
- Transfer History
- Assets**
- Policies
- Contract Definitions
- Logout

Do you have feedback or need help?  
Select [SAML](#) login on following page

CREATE TICKET

TUTORIAL & FAQ

Assets

Search assets + Create asset

1 - 27 of 27

<p>urn:uuid:f64b239b-3424-44f5-bd8d-57c24367b28a-urn:uuid:e5822387-ad48-44fe-9534-239f7f6e4281</p> <p>BPNL0000000000MQ6</p>	<p>urn:uuid:25f997ca-1dfd-472c-bd3f-2250711c4e7b-urn:uuid:c78a288b-5de2-414b-af6e-5537e54386c8</p> <p>BPNL0000000000MQ6</p>	<p>urn:uuid:bef826c1-da2c-40cf-ac57-57059c04e06c-urn:uuid:3735223f-264a-4b38-9c44-6dd6f7195e51</p> <p>BPNL0000000000MQ6</p>	<p>urn:uuid:4e0a7a24-eb80-4eb6-809f-0dd97835666d-urn:uuid:e0b5b606-e8a8-4e7f-8ef5-68589b3a11e1</p> <p>BPNL0000000000MQ6</p>	<p>urn:uuid:2006bfd2-de29-41d9-96d9-b135c400a91c-urn:uuid:470f6b87-ac6f-4e84-a563-f5e90c3bac3f</p> <p>BPNL0000000000MQ6</p>	<p>urn:uuid:17b4fab4-c4dc-4d84-9d02-a2e5e17b8e38-urn:uuid:b371f767-e17c-4efc-a44c-2a17490ab8b8</p> <p>BPNL0000000000MQ6</p>
<p>urn:uuid:05be6ca3-91e8-47ea-ae1e-aeeb1dbfe13e-urn:uuid:81015b4a-7d73-4c98-8c79-b9fa10fef8bb</p> <p>BPNL0000000000MQ6</p>	<p>urn:uuid:22a11cc8-8918-4833-b971cd2024498-urn:uuid:ad5ef9e-49bf-af89afb436aeaa</p> <p>BPNL0000000000MQ6</p>	<p>urn:uuid:f60c0a5-857c-4000-8000-000000000000</p> <p>BPNL0000000000MQ6</p>	<p>urn:uuid:05e14054-4000-8000-0000-000000000000</p> <p>BPNL0000000000MQ6</p>	<p>urn:uuid:db33f37-3d76-4e0a-8aef-2fd3458b9ee9-urn:uuid:a69979a1-86d4-46af-9187-a68e7f7139c8</p> <p>BPNL0000000000MQ6</p>	<p>urn:uuid:63357a7f-3c88-4cbd-9cd0-52f2a04ee23d-urn:uuid:f181e624-af42-4c83-864c-51df6ca8ce66</p> <p>BPNL0000000000MQ6</p>
<p>urn:uuid:b77e5cf7-0696-45c2-9eb0-caf0b002a903-urn:uuid:acb27da5-0151-40ca-acf5-dea24af0e977</p> <p>BPNL0000000000MQ6</p>	<p>urn:uuid:87215295-4a2f-a26422c6eff8e1-urn:uuid:12e3020-48a4-9e950d59885d4</p> <p>BPNL0000000000MQ6</p>	<p>urn:uuid:bd576830-cda8-49fe-a547-16eb7a23dcea-urn:uuid:65f220e4-04c9-4803-b7c6-0c1ac6e033ef</p> <p>BPNL0000000000MQ6</p>	<p>urn:uuid:fc6564f0-dc35-4cbc-b71d-0fa4d3ba7b6f-urn:uuid:17a1d7d1-8807-46bc-91e7-aed58e448cf3</p> <p>BPNL0000000000MQ6</p>	<p>urn:uuid:4062971f-e65f-41e3-a2b3-8882624e9d02-urn:uuid:4cebb95-b267-487b-9e01-02b75c7fe20b</p> <p>BPNL0000000000MQ6</p>	<p>urn:uuid:efb30fe8-f066-4065-a810-a866745df751-urn:uuid:61949771-4b79-4326-8978-3993a1d60d34</p> <p>BPNL0000000000MQ6</p>
<p>urn:uuid:5700abe0-a1d3-4f7a-acbe-d3ee587cac86-urn:uuid:25b18a09-35e5-4b34-9752-f438ada05286</p> <p>BPNL0000000000MQ6</p>	<p>urn:uuid:b327cc6-495a-b4a4be88c054e-urn:uuid:89719d-48d9-9e2189355fdd7</p> <p>BPNL0000000000MQ6</p>	<p>urn:uuid:003cdf73-b168-4026-917e-5e0895204793-urn:uuid:b436ae1a-f047-4bdb-b3ba-78509cc7bb21</p> <p>BPNL0000000000MQ6</p>	<p>urn:uuid:1d650cd9-34d3-416a-9efd-f910c3731de1-urn:uuid:63340f4d-b25a-40c6-94c4-dce6b8df8590</p> <p>BPNL0000000000MQ6</p>	<p>urn:uuid:984d23f4-aa85-416b-b641-1395989fbd4-urn:uuid:06e8d02f-d476-4cfa-8a58-73ae21bcf9e3</p> <p>BPNL0000000000MQ6</p>	<p>urn:uuid:1d650cd9-34d3-416a-9efd-f910c3731de1-urn:uuid:63340f4d-b25a-40c6-94c4-dce6b8df8590</p> <p>BPNL0000000000MQ6</p>

### Create New Asset

- General Information
- Datasource Information


**DATASOURCE**

Type: Custom Datasource Config (JSON)

Custom Datasource Config (JSON):

```
{
  "02&sr=b&sig=W8DnNp4AuH4B8Oy0CW5F7dvqI5NnGqHUBU0qvDVGIqI%3D"
}
```

Cancel **Create**



- Dashboard
- Catalog Browser
- Contracts
- Transfer History
- Assets**
- Policies
- Contract Definitions
- Logout

Do you have feedback or need help?  
Select SAML login on following page

CREATE TICKET

TUTORIAL & FAQ

### Assets

Search assets + Create asset

1 - 28 of 28

<p>↑ <b>uuid:9ea6693b-a0aa-46ca-95b4-cc6f09d04950</b> Cofinity</p> <p>PCF for <b>uuid:9ea6693b-a0aa-46ca-95b4-cc6f09d04950</b></p> <p>0 PCF emissions cradle-to-gate</p>	<p>↑ <b>urn:uuid:f64b239b-3424-44f5-bd8d-57c24367b28a-urn:uuid:e5822387-ad48-44fe-9534-239f7f6e4281</b> BPNL0000000000MQ6</p>	<p>↑ <b>urn:uuid:25f997ca-1dfd-472c-bd3f-22507111c4e7b-urn:uuid:c78a288b-5de2-414b-af6e-5537e54386c8</b> BPNL0000000000MQ6</p>	<p>↑ <b>urn:uuid:bef826c1-da2c-40cf-ac57-57059c04e06c-urn:uuid:3735223f-264a-4b38-9c44-6dd67195e51</b> BPNL0000000000MQ6</p>	<p>↑ <b>urn:uuid:4e0a7a24-eb80-4eb6-809f-0dd97835666d-urn:uuid:e0b5b606-e8a8-4e7f-8ef5-68589b3a11e1</b> BPNL0000000000MQ6</p>	<p>↑ <b>urn:uuid:2006bfd2-de29-41d9-96d9-b135c400a91c-urn:uuid:470f6b87-ac6f-4e84-a563-f5e90c3bac3f</b> BPNL0000000000MQ6</p>
<p>↑ <b>urn:uuid:17b4fab4-c4dc-4d84-9d02-a2e5e17b8e38-urn:uuid:b371f767-e17c-4efc-a44c-2a17490ab8b8</b> BPNL0000000000MQ6</p>	<p>↑ <b>urn:uuid:05be6ca3-91e8-47ea-ae1e-aeeb1dbfe13e-urn:uuid:81015b4a-7d73-4c98-8c79-b9fa10fef8bb</b> BPNL0000000000MQ6</p>	<p>↑ <b>urn:uuid:22ab1ee8-8918-4833-b97c-71cd2024498d-urn:uuid:ad5815d7-ef9e-49fb-af81-9afb436aeaac</b> BPNL0000000000MQ6</p>	<p>↑ <b>urn:uuid:f6009a5-857c-4272-a043-58f9dd1a3173-urn:uuid:658f80ae-d093-4f3e-97ee-2a8160c0fe23</b> BPNL0000000000MQ6</p>	<p>↑ <b>urn:uuid:95a4c951-36de-45be-9c1a-d8673495c635-urn:uuid:beed5a7e-a206-4da0-b17a-04ac34d794e3</b> BPNL0000000000MQ6</p>	<p>↑ <b>urn:uuid:dbe33f37-3d76-4e0a-8aef-2fd3458b9ee9-urn:uuid:a69979a1-86d4-46af-9187-a68e7f7139c8</b> BPNL0000000000MQ6</p>
<p>↑ <b>urn:uuid:63357a7f-3c88-4cbd-9cd0-52f2a04ee23d-urn:uuid:f181e624-af42-4c83-864c-51df6ca8ce66</b> BPNL0000000000MQ6</p>	<p>↑ <b>urn:uuid:b77e5cf7-0696-45c2-9eb0-caf0b002a903-urn:uuid:acb27da5-0151-40ca-acf5-dea24af0e977</b> BPNL0000000000MQ6</p>	<p>↑ <b>urn:uuid:8726bba0-5295-4a2f-a202-6422c6eff8e1-urn:uuid:12ee0676-3020-48a4-968b-950d59885d4c</b> BPNL0000000000MQ6</p>	<p>↑ <b>urn:uuid:06fdb221-4062-48f1-9c56-92e8e9711f4b-urn:uuid:e318a283-933e-4640-891e-226b3d985777</b> BPNL0000000000MQ6</p>	<p>↑ <b>urn:uuid:bfb721a-47cc-425f-9c43-67cfe6a9bbe1-urn:uuid:8e824354-e4b0-454b-92bc-26ec34166691</b> BPNL0000000000MQ6</p>	<p>↑ <b>urn:uuid:bd576830-cda8-49fe-a547-16eb7a23dcea-urn:uuid:65f220e4-04c9-4803-b7c6-0c1ac6e033ef</b> BPNL0000000000MQ6</p>
<p>↑ <b>urn:uuid:fc6564f0-dc35-4cbc-b71d-0fa4d3ba7b6f-urn:uuid:17a1d7d1-8807-46bc-91e7-aed58e448cf3</b> BPNL0000000000MQ6</p>	<p>↑ <b>urn:uuid:5700abe0-a1d3-4f7a-acbed3ee587cac86-urn:uuid:25b18a09-35e5-4b34-9752-f438ada05286</b> BPNL0000000000MQ6</p>	<p>↑ <b>urn:uuid:b3223968-a1d3-4f7a-acbed3ee587cac86-urn:uuid:89765e81-719d-48d9-9d56-2189355fdd70</b> BPNL0000000000MQ6</p>	<p>↑ <b>urn:uuid:ed2a3995-7cc6-495a-b4f0-a4be88c054ed-urn:uuid:cd4aba31-5112-4337-9227-4aa21c07c645</b> BPNL0000000000MQ6</p>	<p>↑ <b>urn:uuid:55b30147-ade0-433d-a871-f1fdeaac2582-urn:uuid:44ab5345-c1a3-4bc9-a901-322230ebb878</b> BPNL0000000000MQ6</p>	<p>↑ <b>urn:uuid:4062971f-e65f-41e3-a2b3-8882624e9d02-urn:uuid:4cebba95-b267-487b-9e01-02b75c7fe20b</b> BPNL0000000000MQ6</p>
<p>↑ <b>urn:uuid:efb30fe8-f066-4065-a810-a866745df751-urn:uuid:61949771-4b79-4326-8978-3993a1d60d34</b> BPNL0000000000MQ6</p>	<p>↑ <b>urn:uuid:1d650cd9-34d3-416a-9efd-f910c3731de1-urn:uuid:63340f4d-b25a-40c6-94c4-dce6b8df8590</b> BPNL0000000000MQ6</p>	<p>↑ <b>urn:uuid:984d23f4-aa85-416b-b641-1395989fbd4-urn:uuid:06e8d02f-d476-4cfa-8a58-dce6b8df8590</b> BPNL0000000000MQ6</p>	<p>↑ <b>urn:uuid:003cdf73-b168-4026-917e-5e0895204793-urn:uuid:b436ae1a-f047-4bdb-b3ba-78509cc7bb21</b> BPNL0000000000MQ6</p>		

- Dashboard
- Catalog Browser
- Contracts
- Transfer History
- Assets
- Policies
- Contract Definitions
- Logout

Contract Definitions

Search contract definitions

Create Contract Definition

1 - 27 of 27

<p>2b7c31e1-b8e2-4646-af95-e66384a569fa</p> <p>Contract Definition</p> <p>ACCESS POLICY 0fac0166-c972-4dd6-87af-9f6c20b09217</p> <p>CONTRACT POLICY 0e15a165-b450-4921-beb8-f9c00ff02206</p> <p>ASSETS urn:uuid:f64b239b-3424-44f5-bd8d-57c24367b28a-urn:uuid:e5822387-ad48-44fe-9534-239f7f6e4281</p>	<p>bb614edf-3eb4-4945-81c7-51207dbfb4f8</p> <p>Contract Definition</p> <p>ACCESS POLICY 3a5f4501-11ad-435a-b91f-b7d3eb267f62</p> <p>CONTRACT POLICY d7caccfe-eb6c-4db2-aa9f-1cd3ad270e0a</p> <p>ASSETS urn:uuid:2f...</p>	<p>d89acdbc-ce5c-48b6-be29-07e9f8adb9bc</p> <p>Contract Definition</p> <p>ACCESS POLICY 0e2e0e77-946f-4b37-a297-0a67b156bbd2</p> <p>CONTRACT POLICY 6dd61f25-ebd7-4291-a23d-462469ad8990</p> <p>ASSETS</p>	<p>66638dfe-3a86-4fd1-9e08-1741500d6e91</p> <p>Contract Definition</p> <p>ACCESS POLICY efc9c76b-26aa-4462-80b7-07f5ddd55c70</p> <p>CONTRACT POLICY 1e91c184-24dc-46bc-9924-72b17b584e48</p> <p>ASSETS urn:uuid:4e0a7a24-eb80-4eb6-809f-0dd97835666d-urn:uuid:e0b5b606-e8a8-4e7f-8ef5-68589b3a11e1</p>
--------------------------------------------------------------------------------------------------------------------------------------------------------------------------------------------------------------------------------------------------------------------------------------------------------------------	---------------------------------------------------------------------------------------------------------------------------------------------------------------------------------------------------------------------------------------	--------------------------------------------------------------------------------------------------------------------------------------------------------------------------------------------------------------------	--------------------------------------------------------------------------------------------------------------------------------------------------------------------------------------------------------------------------------------------------------------------------------------------------------------------

Create New Contract Definition

ID \*  
PCF-for-sovity

Access Policy \*  
sovity GmbH only

Contract Policy \*  
sovity GmbH only

Assets \*  
uuid:9ea6693b-a0aa-46ca-95b4-cc6f09d04950

Cancel Create

<p>ffde1574-3c96-4d31-b429-1237dcaa97dc</p> <p>Contract Definition</p> <p>ACCESS POLICY 1b43f5e8-1d39-44b9-b209-84e1173acea8</p> <p>CONTRACT POLICY 7df9a800-071b-46be-8829-aed045dcc1be</p> <p>ASSETS urn:uuid:2006bfd2-de29-41d9-96d9-b135c400a91c-urn:uuid:470f6b87-ac6f-4e84-a563-f5e9c3bac3f</p>	<p>12345678-9012-3456-7890-123456789012</p> <p>Contract Definition</p> <p>ACCESS POLICY 2d9474c8-...</p> <p>CONTRACT POLICY 3021d144-...</p> <p>ASSETS urn:uuid:12345678-9012-3456-7890-123456789012</p>	<p>852258d1-9b9b-4651-8bc7-96e99496545c</p> <p>Contract Definition</p> <p>ACCESS POLICY 84277-2f01-45b2-817e-eb824a02b820</p> <p>CONTRACT POLICY 5e335-0f29-4965-98b4-2f525b070a81</p> <p>ASSETS urn:uuid:22ab1ee8-8918-4833-b97c-71cd2024498d-urn:uuid:ad5815d7-e9e-49bf-af81-9afb436aeaac</p>	<p>bf13197d-674d-4f64-944e-f05f56ad939d</p> <p>Contract Definition</p> <p>ACCESS POLICY 6e4eb-6424-4040-b685-828df7d03f2b</p> <p>CONTRACT POLICY fc047fb1-1885-4b4b-834f-e16808c31132</p> <p>ASSETS urn:uuid:63357a7f-3c88-4cbd-9cd0-52f2a04ee23d-urn:uuid:f181e624-af42-4c83-864c-51df6ca8ce66</p>
-------------------------------------------------------------------------------------------------------------------------------------------------------------------------------------------------------------------------------------------------------------------------------------------------------------------	----------------------------------------------------------------------------------------------------------------------------------------------------------------------------------------------------------------------	-------------------------------------------------------------------------------------------------------------------------------------------------------------------------------------------------------------------------------------------------------------------------------------------------------------	-----------------------------------------------------------------------------------------------------------------------------------------------------------------------------------------------------------------------------------------------------------------------------------------------------------------

<p>02202daa-fcdb-479e-8657-310674c8c5ea</p> <p>Contract Definition</p> <p>ACCESS POLICY 6a821bbb-46c5-4ae8-be6c-00219e696fb9</p> <p>CONTRACT POLICY feafbd5-2a61-4f5a-83fb-931af4f42692</p> <p>ASSETS urn:uuid:f600c9a5-857c-4272-a043-58f9dd1a3173-urn:uuid:658f80ae-d093-4f3e-97ee-2a8160c0fe23</p>	<p>d9012345-6789-0123-4567-890123456789</p> <p>Contract Definition</p> <p>ACCESS POLICY 186f5bbe-7...</p> <p>CONTRACT POLICY a0358392-08e7-4b8c-8ebf-e3bb5f385e71</p> <p>ASSETS urn:uuid:95a4c951-36de-45be-9c1a-d8673495c635-urn:uuid:beed5a7e-a206-4da0-b17a-04ac34d794e3</p>	<p>2d0e113a-fa2a-4b28-b13e-9737250a59ce</p> <p>Contract Definition</p> <p>ACCESS POLICY 04094d40-8121-4880-a707-c88362d0ee48</p> <p>CONTRACT POLICY de0c4937-7053-48e6-9438-a6c2e0a2fc4c</p> <p>ASSETS urn:uuid:06fdb221-4062-48f1-9c56-92e8e9711f4b-</p>	<p>6b3a2d77-6bb4-4ab2-a4d1-5a0587f77b43</p> <p>Contract Definition</p> <p>ACCESS POLICY 1ef9779f-75a2-441b-98f7-08ae88c5ae5e</p> <p>CONTRACT POLICY 18e25a5b-68d0-4157-8c67-249f896b3577</p> <p>ASSETS urn:uuid:bfa721a-47cc-425f-9c43-67cfe6a9bbe1-</p>
-------------------------------------------------------------------------------------------------------------------------------------------------------------------------------------------------------------------------------------------------------------------------------------------------------------------	---------------------------------------------------------------------------------------------------------------------------------------------------------------------------------------------------------------------------------------------------------------------------------------------	-----------------------------------------------------------------------------------------------------------------------------------------------------------------------------------------------------------------------------------------------------------------------	----------------------------------------------------------------------------------------------------------------------------------------------------------------------------------------------------------------------------------------------------------------------

Do you have feedback or need help?  
Select SAML login on following page

CREATE TICKET

TUTORIAL & FAQ



- Dashboard
- Catalog Browser
- Contracts
- Transfer History
- Assets
- Policies
- Contract Definitions
- Logout

Catalog Browser

Search catalog

Connector Endpoints

https://cofinity-preprod-03.stage-sovity.azure.sovity.io/control/api/v1/dsp

1 - 17 of 17

<p>urn:uuid:003cdf73-b168-4026-917e-5e0895204793-urn:uuid:b436ae1a-f047-4bdb-b3ba-78509cc7bb21</p> <p>BPNL0000000000MQ6</p>	<p>urn:uuid:984d23f4-aa85-416b-b641-1395989fbd4d-urn:uuid:06e8d02f-d476-4cfa-8a58-73ae21bcf9e3</p> <p>BPNL0000000000MQ6</p>	<p>urn:uuid:1d650cd9-34d3-416a-9efd-f910c3731de1-urn:uuid:63340f4d-b25a-40c6-94c4-dce6b8df8590</p> <p>BPNL0000000000MQ6</p>	<p>urn:uuid:efb30fe8-f066-4065-a810-a866745df751-urn:uuid:61949771-4b79-4326-8978-3993a1d60d34</p> <p>BPNL0000000000MQ6</p>	<p>urn:uuid:4062971f-e65f-41e3-a2b3-8882624e9d02-urn:uuid:4cebba95-b267-487b-9e01-02b75c7fe20b</p> <p>BPNL0000000000MQ6</p>	<p>urn:uuid:55b30147-ade0-433d-a871-f1fdeaac2582-urn:uuid:44ab5345-c1a3-4bc9-a901-322230ebb878</p> <p>BPNL0000000000MQ6</p>
<p>urn:uuid:ed2a3995-0428-49b8-9126-93c9ec611a32-urn:uuid:cd4aba31-5112-4337-9227-4aa21c07c645</p> <p>BPNL0000000000MQ6</p>	<p>urn:uuid:b3223968-7cc6-495a-b4f0-a4be88c054ed-urn:uuid:89765e81-719d-48d9-9d56-2189355fdd70</p> <p>BPNL0000000000MQ6</p>	<p>urn:uuid:5700abe0-a1d3-4f7a-acbe-d3ee587cac86-urn:uuid:25b18a09-35e5-4b34-9752-f438ada05286</p> <p>BPNL0000000000MQ6</p>	<p>urn:uuid:fc6564f0-dc35-4cbc-b71d-0fa4d3ba7b6f-urn:uuid:17a1d7d1-8807-46bc-91e7-aed58e448cf3</p> <p>BPNL0000000000MQ6</p>	<p>urn:uuid:bd576830-cda8-49fe-a547-16eb7a23dcea-urn:uuid:65f220e4-04c9-4803-b7c6-0c1ac6e033ef</p> <p>BPNL0000000000MQ6</p>	<p>urn:uuid:bfa721a-47cc-425f-9c43-67cfe6a9bbe1-urn:uuid:8e824354-e4b0-454b-92bc-26ec34166691</p> <p>BPNL0000000000MQ6</p>
<p>urn:uuid:06fdb221-4062-48f1-9c56-92e8e9711f4b-urn:uuid:e318a283-933e-4640-891e-226b3d985777</p> <p>BPNL0000000000MQ6</p>	<p>urn:uuid:8726bba0-5295-4a2f-a202-6422c6eff8e1-urn:uuid:12ee0676-3020-48a4-968b-950d59885d4c</p> <p>BPNL0000000000MQ6</p>	<p>urn:uuid:b77e5cf7-0696-45c2-9eb0-caf0b002a903-urn:uuid:acb27da5-0151-40ca-acf5-dea24af0e977</p> <p>BPNL0000000000MQ6</p>	<p>urn:uuid:f64b239b-3424-44f5-bd8d-57c24367b28a-urn:uuid:e5822387-ad48-44fe-9534-239f7f6e4281</p> <p>BPNL0000000000MQ6</p>	<p>uid:9ea6693b-a0aa-46ca-95b4-cc6f09d04950</p> <p>Cofinity</p> <p>PCF for uid:9ea6693b-a0aa-46ca-95b4-cc6f09d04950</p> <p>0 PCF emissions</p> <p>cradle-to-gate</p>	

Do you have feedback or need help?  
 Select SAML login on following page

CREATE TICKET

TUTORIAL & FAQ

- Dashboard
- Catalog Browser
- Contracts
- Transfer History
- Assets
- Policies
- Contract Definitions
- Logout

Catalog Browser

Search catalog

Connector Endpoints  
<https://cofinity-preprod-03.stage-sovity.azure.sovity.io/control/api/v1/dsp>

1 - 17 of 17

urn:uuid:003cdf73-b168-4026-917e-5e0895204793-urn:uuid:b436ae1a-f047-4bdb-b3ba-78509cc7bb21 BPNL000000000MQ6	urn:uuid:984d23f4-aa85-416b-b641-1395989fbdd4-urn:uuid:06e8d02f-d476-4cfa-8a58-73ae21bcf9e3 BPNL000000000MQ6	urn:uuid:1d650cd9-34d3-416a-9efd-f910c3731de1-urn:uuid:63340f4d-b25a-40c6-94c4-dce6b8df8590 BPNL000000000MQ6	urn:uuid:efb30fe8-f066-4065-a810-a866745df751-urn:uuid:61949771-4b79-4326-8978-3993a1d60d34 BPNL000000000MQ6	urn:uuid:4062971f-e65f-41e3-a2b3-8882624e9d02-urn:uuid:4cebba95-b267-487b-9e01-02b75c7fe20b BPNL000000000MQ6	urn:uuid:55b30147-ade0-433d-a871-f1fdeaac2582-urn:uuid:44ab5345-c1a3-4bc9-a901-322230ebb878 BPNL000000000MQ6
-----------------------------------------------------------------------------------------------------------------	-----------------------------------------------------------------------------------------------------------------	-----------------------------------------------------------------------------------------------------------------	-----------------------------------------------------------------------------------------------------------------	-----------------------------------------------------------------------------------------------------------------	-----------------------------------------------------------------------------------------------------------------

**uuid:9ea6693b-a0aa-46ca-95b4-cc6f09d04950**  
Cofinity

PCF for uuid:9ea6693b-a0aa-46ca-95b4-cc6f09d04950

PCF emissions cradle-to-gate

<p>ID uuid-9ea6693b-a0aa-46ca-95b4-cc6f09d04950-0</p> <p>PUBLISHER <a href="https://sovity.de">https://sovity.de</a></p> <p>PARTICIPANT ID BPNL000000000MQ6</p> <p>HTTP DATA SOURCE PARAMETERIZATION Disabled</p>	<p>VERSION 0</p> <p>ENDPOINT DOCUMENTATION -</p> <p>ORGANIZATION Cofinity</p> <p>CONTENT TYPE application/json</p>	<p>LANGUAGE English</p> <p>STANDARD LICENSE <a href="https://sovity.de/license">https://sovity.de/license</a></p> <p>CONNECTOR ENDPOINT <a href="https://cofinity-preprod-03.stage-sovity.azure.sovity.io/control/api/v1/dsp">https://cofinity-preprod-03.stage-sovity.azure.sovity.io/control/api/v1/dsp</a></p>
-----------------------------------------------------------------------------------------------------------------------------------------------------------------------------------------------------------------------------------	------------------------------------------------------------------------------------------------------------------------------------	-------------------------------------------------------------------------------------------------------------------------------------------------------------------------------------------------------------------------------------------------------------------------------------------------------------------------------

CONTRACT OFFER

CONTRACT OFFER ID  
UENGLWZvcl1zb3ZpdHk=:dXVpZC05ZWE2NjkzY1hMGFhLTQ2Y2EOTVINC1JyZmMdlkMQ5N  
TAtMA=:N2E2ZmU0MzgtMdc3Yi00N2U2LWlzOTYtMjVhNjY5M2IzMDI5

POLICY  
\$.permissions[0].constraints[0]: OrConstraints are currently unsupported.

POLICY JSON-LD  
Show JSON-LD

Close Negotiate

- Dashboard
- Catalog Browser
- Contracts
- Transfer History
- Assets
- Policies
- Contract Definitions
- Logout

Contracts

Search contract agreements...

CONSUMING CONTRACT AGREEMENTS

**uuid-9ea6693b-a0aa-46ca-95b4-cc6f09d04950-0**  
BPNL00000000MQ6

No description.

TRANSFER HISTORY  
No transfer processes started yet.

CONTRACT AGREEMENT

SIGNED  
2024-03-04 17:36:24

COUNTER-PARTY PARTICIPANT ID  
BPNL00000000MQ6

CONTRACT POLICY

POLICY  
\$.permissions[0].constraints[0]: OrConstraints are currently unsupported.

ASSET

ID  
uuid-9ea6693b-a0aa-46ca-95b4-cc6f09d04950-0

PUBLISHER  
-

PARTICIPANT ID  
BPNL00000000MQ6

### Initiate Transfer

DATASINK

Type  
REST-API Endpoint

Method  
POST

URL  
https://webhook.site/be71948e-fab8-41db-a3fa-

AUTHENTICATION  
Add Authentication

ADDITIONAL HEADERS  
Add Additional Header

HTTP DATASOURCE PARAMETERIZATION

When the data offer on the provider side is of the type **HttpData** and certain data source fields are set, certain parts of the request to the data source can be customized from the consumer side and will be passed to the other connector when initiating the transfer. This allows an asset to contain more than just one kind of data, allowing additional filtering or even sharing of entire APIs with multiple data sets via a single asset and a single contract.

Show Http Datasource Parameterization Fields

Cancel **Initiate Transfer**

REEMENT ID  
11zb3ZpdHk=dXVpZC05ZWE2NjkzYi1hMGFhLTQyY2E0TVINC1JyZmMDiikMDQ5N  
tU1ODiIM2iODM0Ni00OWFkLWFhMjktMDVlYTU2NDUwMwY4

ENDPOINT  
ity-preprod-03.stage-sovity.azure.sovity.io/control/api/v1/dsp

Close **Transfer**

test asset for blob 1.0 digital twin blob	https://cofinity-preprod-03.stage-sovity.azure.sovity.io/control/api/v1/dsp	https://cofinity-preprod-03.stage-sovity.azure.sovity.io/control/api/v1/dsp	https://cofinity-preprod-03.stage-sovity.azure.sovity.io/control/api/v1/dsp
urn:uuid:b75ae67d-b2de-4478-bed8-8a168b28be31-urn:uuid:47dbd6f8-a8b5-4580-b9cf-e28ca0c8a9b7 BPNL0000000024R	GHG Methane Emissions test Cofinity SIGNED about 2 months ago TRANSFERS 1	GHG Methane Emissions test Cofinity SIGNED about 2 months ago TRANSFERS 6	urn:uuid:b75ae67d-b2de-4478-bed8-8a168b28be31-urn:uuid:47dbd6f8-a8b5-4580-b9cf-e28ca0c8a9b7 BPNL0000000024R

Do you have feedback or need help?  
Select SAML login on following page

**CREATE TICKET**

TUTORIAL & FAQ

REQUESTS (1/100) Newest First

Search Query

POST #eb147 20.113.42.243 04.03.2024 17:36:58

Query strings (empty)

Files

content-length 3411

Form values (empty)

Raw Content Format JSON Word-Wrap Copy

```

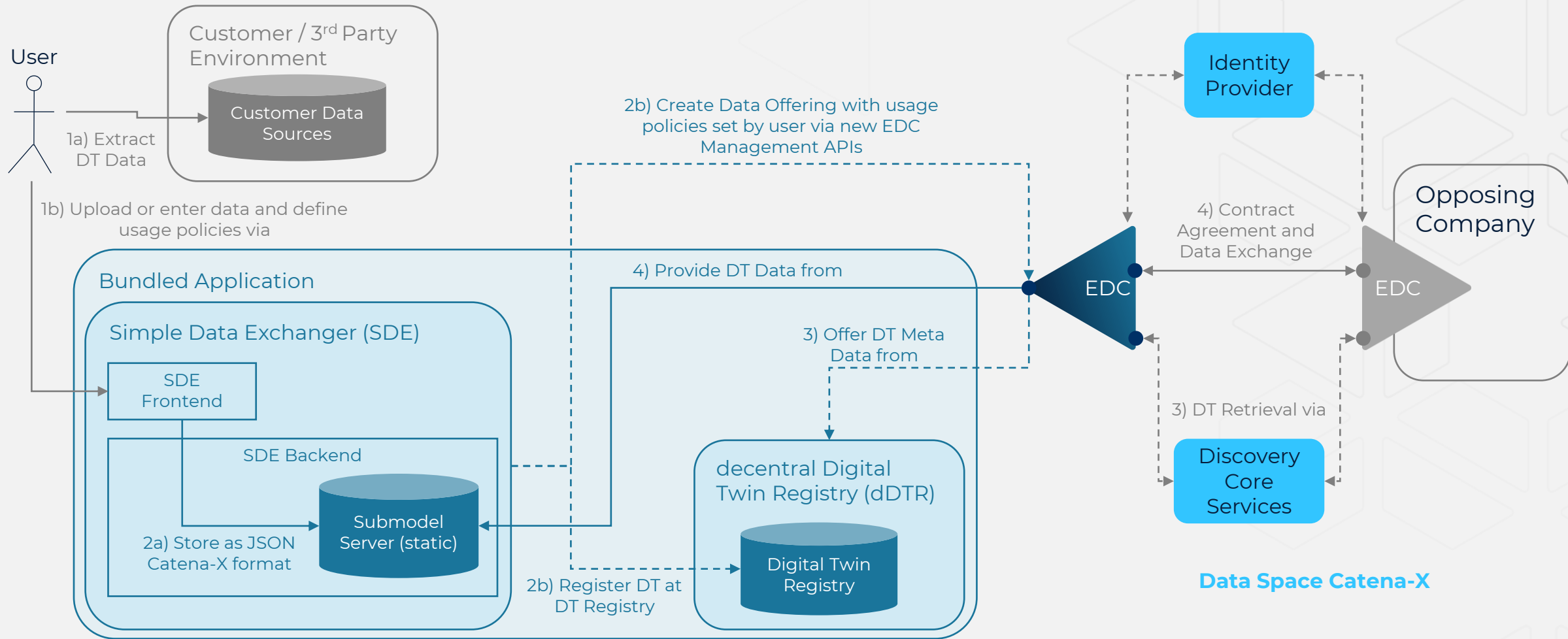
{
  "specVersion": "2.0.1-20231214",
  "companyIds": [
    {
      "companyId": "urn:uuid:9ea6693b-a0aa-46ca-95b4-cc6f09d04950"
    }
  ],
  "extWBCSD_productCodeCpc": "011-99000",
  "created": "2023-05-22T21:47:32Z",
  "companyName": "My Corp",
  "extWBCSD_pFStatus": "Active",
  "productName": "My Product Name",
  "version": 0,
  "pcf": {
    "productOrSectorSpecificRules": [
      {
        "extWBCSD_operator": "PEF",
        "productOrSectorSpecificRules": [
          {
            "ruleName": "urn:itfs-initiative.com:PCR:The Product Carbon Footprint Guideline for the Chemical Industry:version:v2.0"
          }
        ],
        "extWBCSD_otherOperatorName": "NSF"
      }
    ],
    "secondaryEmissionFactorSources": [
      {
        "secondaryEmissionFactorSource": "ecoinvent 3.8"
      }
    ],
    "dataQualityRating": {
      "completenessDQR": 2,
      "technologicalDQR": 2,
      "geographicalDQR": 2,
      "temporalDQR": 2,
      "reliabilityDQR": 2,
      "coveragePercent": 100
    },
    "crossSectoralStandardsUsed": [
      {
        "crossSectoralStandard": "GHG Protocol Product standard"
      }
    ],
    "biogenicCarbonEmissionsOtherThanCO2": 1,
    "distributionStagePcfExcludingBiogenic": 1.5,
    "biogenicCarbonWithdrawal": 0,
    "distributionStageBiogenicCarbonEmissionsOtherThanCO2": 1,
    "extWBCSD_allocationRulesDescription": "In accordance with Catena-X PCF Rulebook",
    "exemptedEmissionsDescription": "No exemption",
    "distributionStageFossilGhgEmissions": 0.5,
    "exemptedEmissionsPercent": 0,
    "geographyCountrySubdivision": "US-NY",
    "extTFS_luGhgEmissions": 0.3,
    "distributionStageBiogenicCarbonWithdrawal": 0.5,
    "pcfIncludingBiogenic": 1,
    "aircraftGhgEmissions": 0,
  }
}

```

# Journey towards Interoperability

1. Who is soviety
2. soviety's EDC versions
3. Open-Sourced Features
4. **What's next?**

# Align EDC Usage Pattern on Best Practices

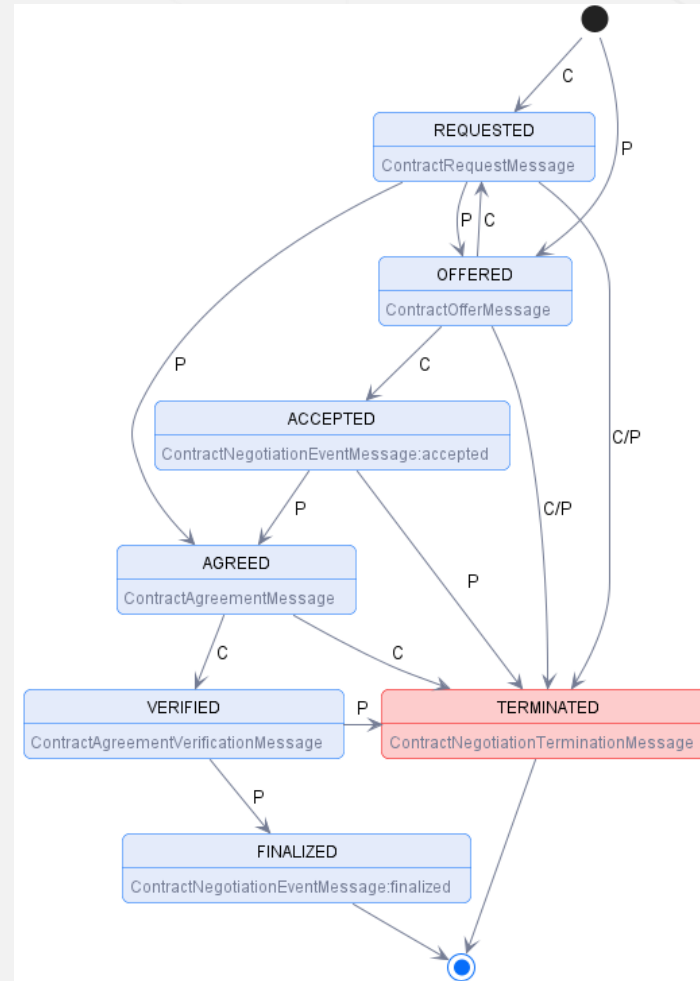


Data Space Catena-X

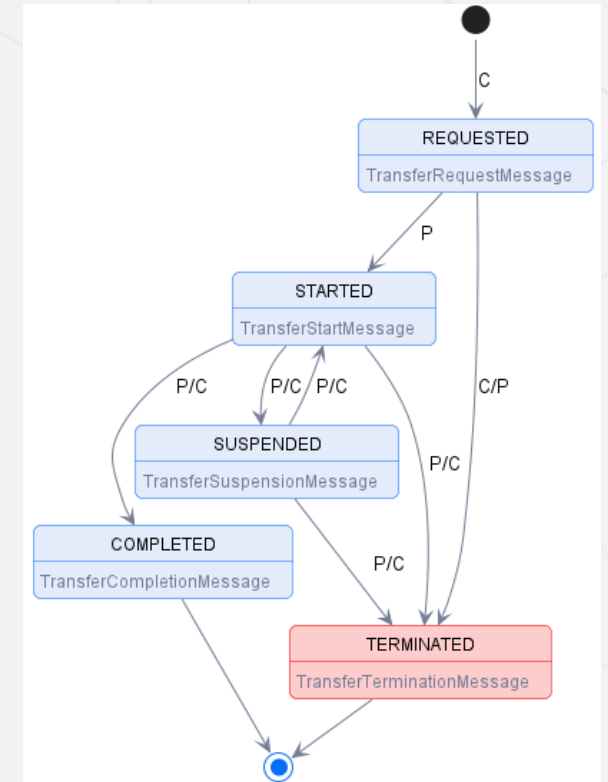
# Extend EDC (DSP) with Further Processes

- Participant Communication
- Accept/decline contract negotiation requests manually
- Notification processes
- Provider initiated data push
- ... and many more

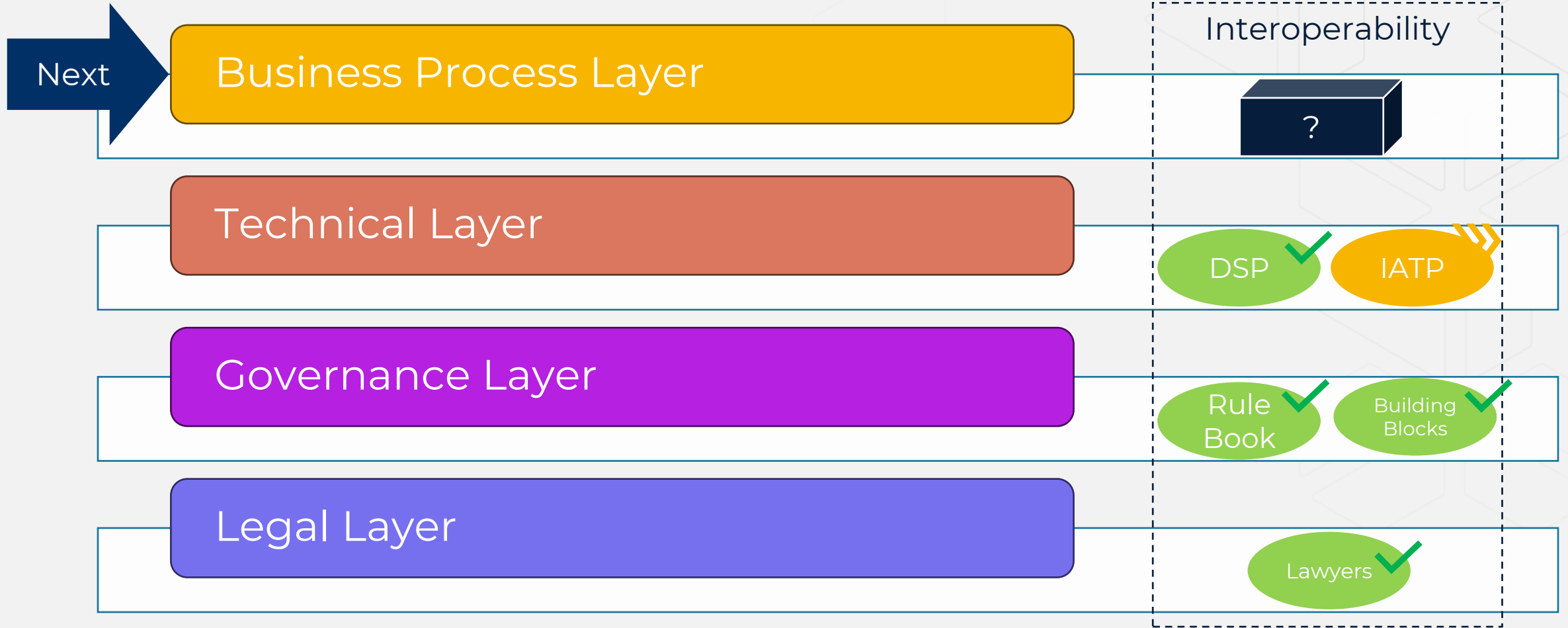
## Contract Negotiation



## Transfer Process



# Next is Business Process Interoperability!





# Let us accelerate the new era of data sharing!

## Thank you!

**Dr. Sebastian Opiel** | CTO & Co-Founder

[Sebastian.Opiel@sovity.de](mailto:Sebastian.Opiel@sovity.de)

[LinkedIn](#) | [www.sovity.de](http://www.sovity.de) | [github.com/sovity](https://github.com/sovity)

