

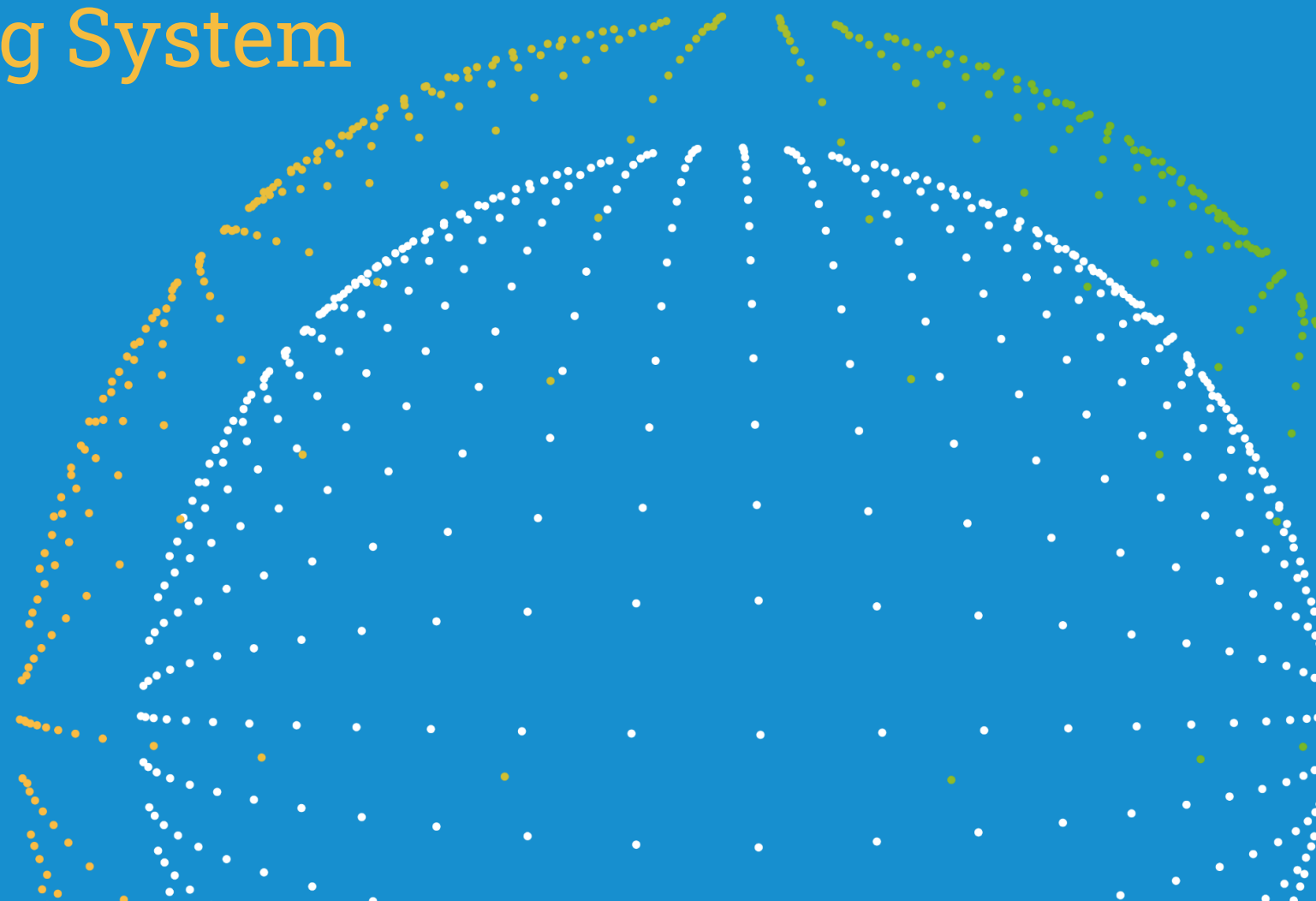
# Data Spaces Symposium

ZF

Data Space Operating System

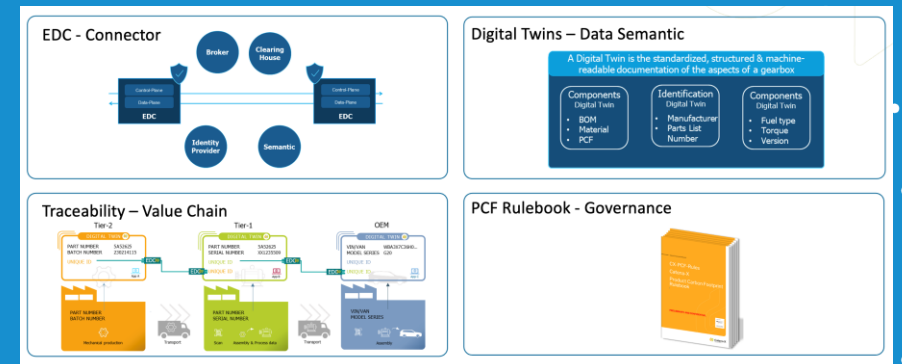
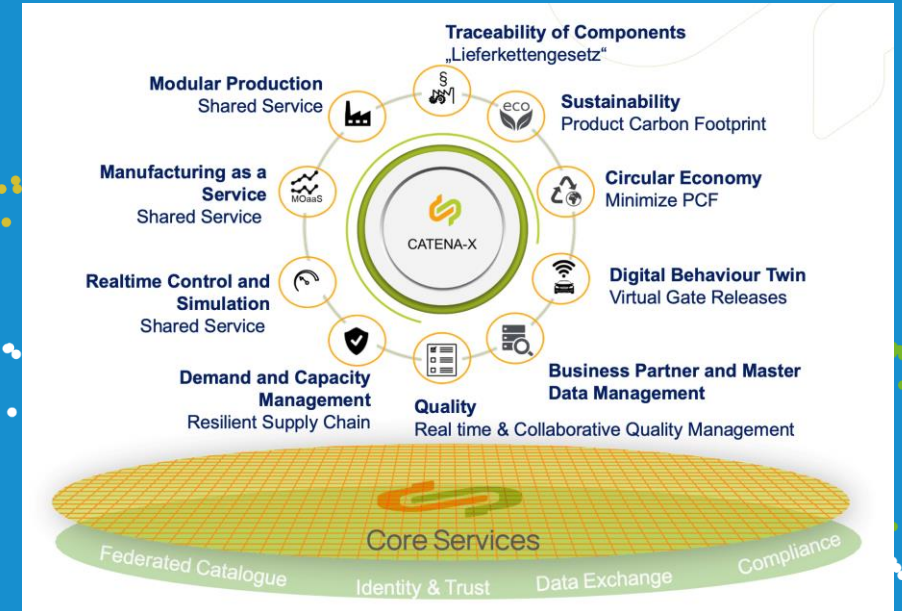
---

Dr. Markus Lehmann  
ZF Friedrichshafen AG

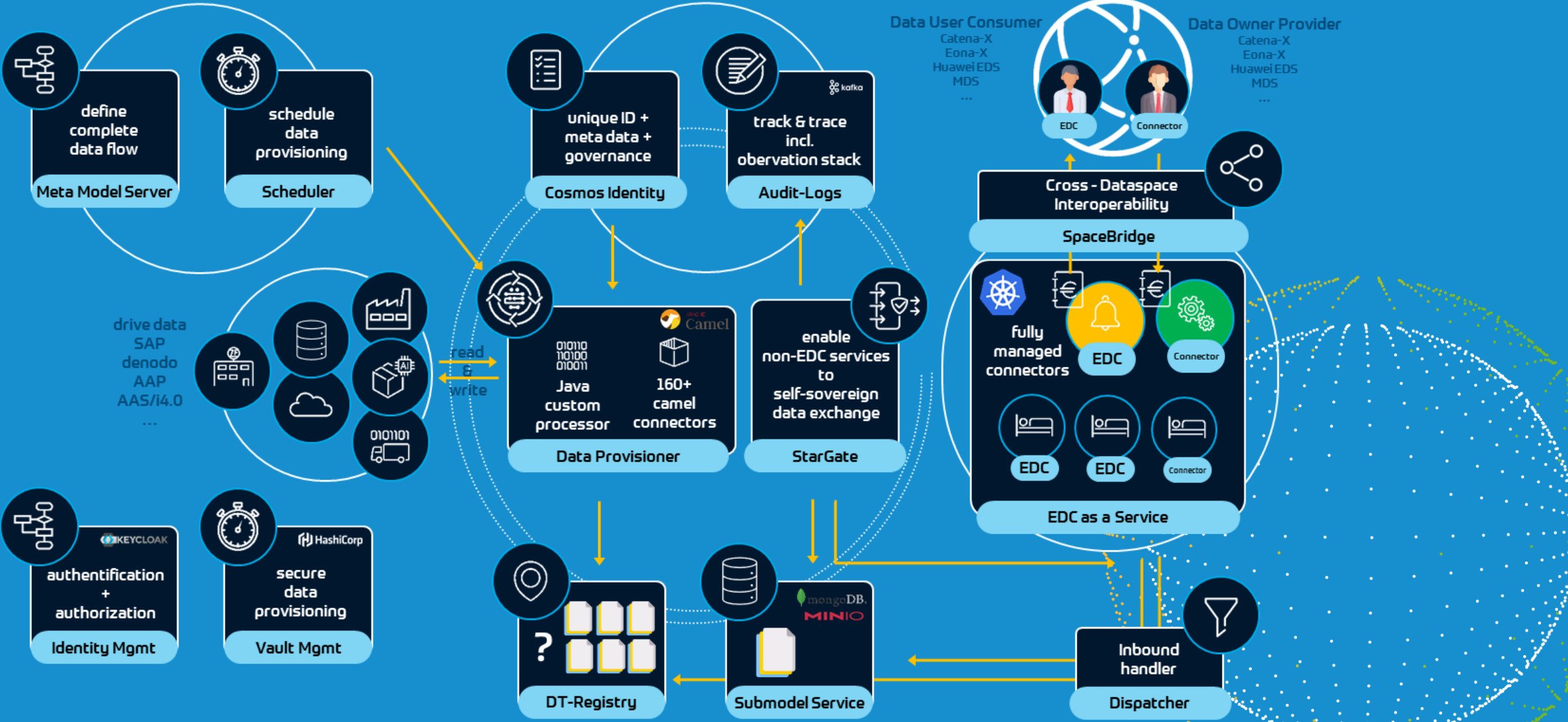


# ZF and Data Spaces

- Mobility Data Space and Catena-X
- Connector development
- Self-purpose to support 165k people with an out-of-the-shelf solution
- Required use cases:
  - Traceability, Product Carbon Footprint (PCF), Product Passes, ...
- IP-Share and Co-development with operating company Cofinity-X
- Enabling partners and Our whole supply chain including SMEs



# Operating System - Architecture





Wizards

Apps

Components

Contact

Users

Technical users

ALL

Reset

[+ Add component](#)

# ↑↓	Type ↑↓	Version ↑↓	Owner ↑↓	Name ↑↓	Description ↑↓	Status ↑↓
1	METAMODEL	0.0.1	french-hub	Metamodel service	Metamodel service	
2	EDC	0.5.3	french-hub	consumer	The consumer EDC	Ok
3	EDC	0.5.3	french-hub	Provider	The provider EDC	Ok
4	SUBMODEL SERVICE	0.1.0	french-hub	provider-submodel	The submodel service of the provider	Ok
5	DTR	0.3.19	french-hub	provider-dtr	The DTR of the provider	Ok





[← Back](#)

[☰ Component details](#)

[📁 Assets](#)

[📄 Contract definitions](#)

[📄 Policies](#)

[☰ Catalog](#)

[📄 Contract negotiations](#)

[📄 Contract agreements](#)

[⬇ Transfers](#)

[👤 Handlers](#)

[✓ Monitoring](#)

[📄 Logs](#)

Component name: consumer

### Component details

**Id:** 616a0043-e729-41c2-a604-bdee3e914db2  
**Type:** EDC  
**Name:** french-hub-consumer  
**Company Name:** french-hub  
**Status:** OK

### Department

**Id:** 4afcc0b6-6280-41ab-adeb-4fae000f205c  
**Name:** Sales  
**Cost Center:** 123  
**Owner:** dfe5a928-8e76-4cfd-9d41-3ae093f3b1e8  
**Display Name:** consumer  
**Description:** The consumer EDC

### Component Version

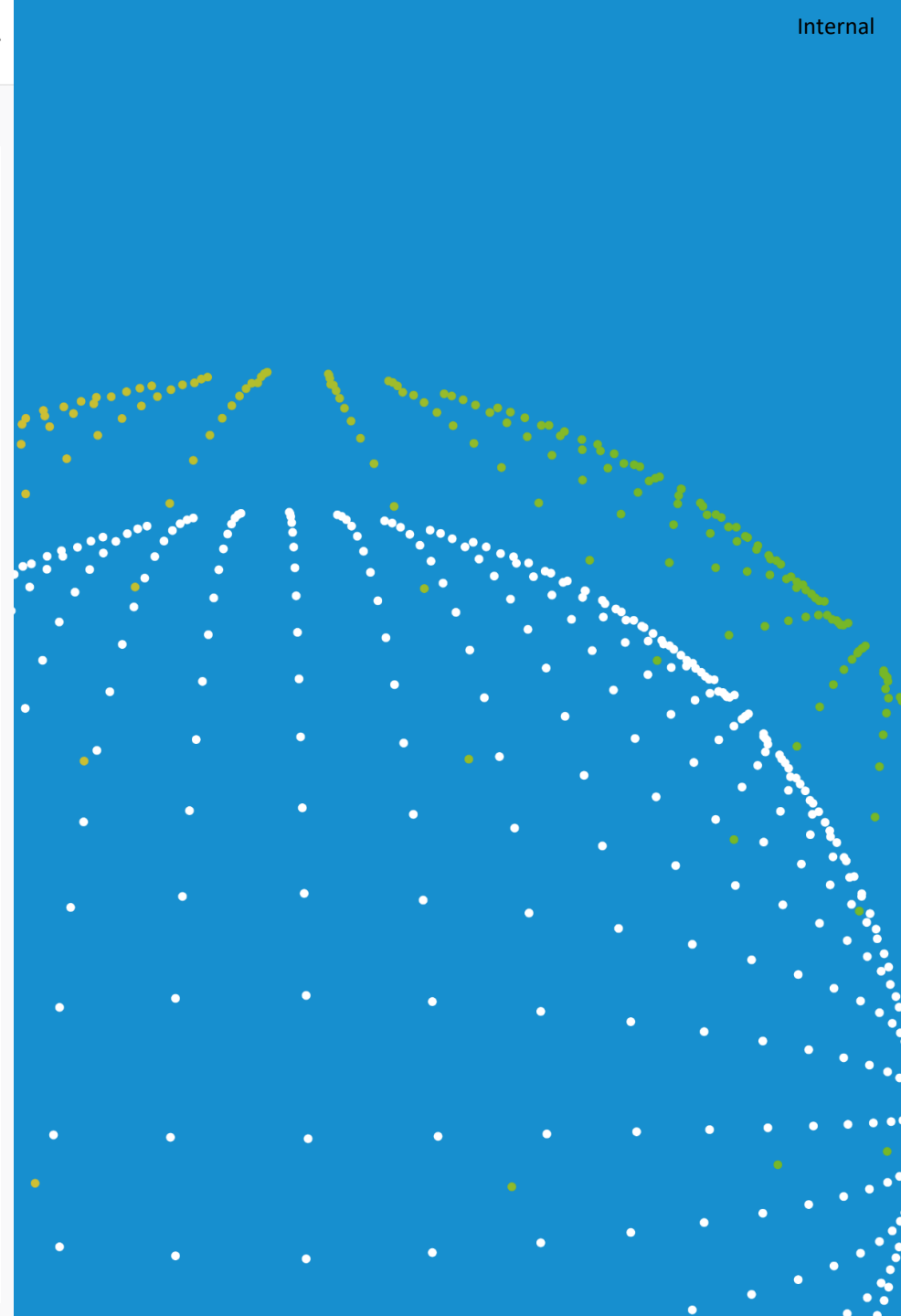
**Id:** 87b45fa1-6d51-4dd3-bad5-bc392a3739f5  
**Version:** 0.5.3  
**Type:** EDC

### Control Plane

**Auth Key:** 12345  
**Edc Url:** <https://french-hub-consumer-dos-dev.apps.e4l9k92m.westeurope.aroapp.io>


### MIW

**Url:** <https://managed-identity-wallets-new.int.demo.catena-x.net>  
**Authority Id:** BPNL00000003CRHK  
**Oauth Client Id:** sa47  
**Oauth Token Url:** <https://centralidp.int.demo.catena-x.net/auth/realms/CX-Central/protocol/openid-connect/token>  
**Bpn:** BPNL00000007QJRC






Designed and developed by IT - Automotive Ecosystems.

 Wizards

 Apps

 Components

 Contact

 Users

 Technical users



ZF Green



ZF DPP (Digital Product Passport)



ZF Quality



ZF Data Space Analytics



ZF Trace-X




ZF Data Space Search



Designed and developed by IT - Automotive Ecosystems.

 Wizards

 Apps

 Components

 Contact

 Users

 Technical users



Share data set



Get data set

# Thank you!

- Let's be interoperable!
- Let's build new Data Spaces!

With ZF DOS.

SCAN ME



Dr. Markus Lehmann  
markus.Lehmann@zf.com  
zf.com/dos

